



# AUDUBON'S WARBLER

Vol. 45. no 9 - NOVEMBER 2016  
Newsletter of **Kern Audubon Society**  
A chapter of National Audubon Society

**Kern Audubon**  
**TUES. NOVEMBER 1, 2016 - 7:00pm**  
Kern Supt of Schools City Center  
1300 17th St. (17th & L) Parking lot at 18th & K

**"BEHIND THE FEATHERS: ATTRACTING  
BIRDS TO YOUR YARD"**



Due to urban sprawl and the large expanses of corporate farming monoculture, the natural habitat of the central valley is quickly disappearing. Wildlife suffers from loss of migratory corridors, shelter, food supply and even fresh water. In a powerpoint presentation entitled "Behind the Feathers--Attracting Birds to Your Backyard", Gary Lindquist will offer tips on how to attract birds. The presentation will cover water, shelter and the type of foods and feeders needed to support birds in an urban environment. He'll also talk about the risks and dangers of being a bird in the modern world.

*Gary Lindquist is a retired small-animal veterinarian and Visalia resident where he has been active for many years with Tulare Audubon. Currently he serves as co-leader for the chapter's bi-monthly field trips. He is a well known valley photographer. His photo(above) of the Common Cuckoo found in Watsonville, California was a cover photo for Western Ornithology magazine. Gary grew up in Arkansas, attended the University of Arkansas and received his Doctorate of Veterinary Medicine from the University of Missouri. He started birding as a child on the farm when he discovered Roger Tory Peterson's Field Guide to Eastern Birds. He feels there is much more to birding than just identifying the bird and putting it on a list. "In my photos I strive to capture a behavior or trait that makes that bird special. I*

## NOVEMBER FIELD TRIPS

### **TUES NOV 8, 8:30AM - TRUXTUN LAKE**

Bill Moffat will lead this morning outing along the shores of Truxtun Lakes where we can expect to see fall migrants, wintering birds, waterfowl, shorebirds and year-round residents. Beginning birders especially welcome! Meet at the Truxtun Extension parking lot between Mohawk and the painted water tower at **8:30am**. Wear good walking shoes, bring water/snacks. Binocs are suggested and we have some to loan. Contact Bill (661-201-9279) for more information.

**SAT NOV 19, AFTERNOON/EVENING 1:30- 7:00- LOWER TULE RIVER & RETURN OF THE CRANES EVENT @ PIXLEY NWR** This promises to be a great afternoon & evening of birding just north of Kern county. Meet at the Rosedale Costco parking lot, 1:30PM near the gas station for carpooling. **Bring a SACK DINNER**, snacks & water, binoculars, walking shoes, flashlight, jacket & \$10 for carpool drivers.

The lower Tule River is a great migrant trap in the fall where we can observe the birds in riparian vegetation. We'll head towards the Tule River just west of Hwy 43, about 8 miles north of Pixley. Gradually, we'll make our way south and east towards Pixley, and look along the way for foraging Sandhill Cranes, Mountain Plovers, White-faced Ibis, long-billed Curlews, burrowing owls, 3 species of blackbirds, and many more.

The Return of the Cranes event will start at 3:00 PM at the Pixley National Wildlife Refuge-- see inside poster!

Those wishing to only attend the Sandhill Crane event can meet at Pixley NWR at 3-3:30pm. It's a 45 minute drive from Bakersfield to Earlimart via Hiway 99. Go west at Avenue 56 approx 5.7 miles to a sign to refuge. Turn (north) on Road 88 and go 1 mile to the refuge parking lot. Contact Deb See( 661-809-6135) for more information.

### **SAT. NOVEMBER 26 - STALLION SPRINGS COVERED BRIDGE**

Kern Audubon-Tehachapi will host a morning walk at the Stallion Springs covered bridge at Horsethief Park. Swallows, fall migrants & resident birds will be abundant! Meet at the Burger King on Tehachapi





### PANORAMA VISTA PRESERVE WORKPARTY

Saturday November 12th is the next work day at the preserve. Bring your gloves, water bottle, hat, boots as well as tools if you have them. We'll be working on tumbleweeds, hoeing mustard and rodent repair on the drip lines! If you have questions call David Schaad (428-2841) or e-mail : davidws@pacbell.net. Meet at the east end of Roberts Lane off of Manor



#### **Photos from the Tule Elk Reserve "Bed & Bugle" event.....**

above left : The Elk Bus tour with Ranger Bill and on the right a Great Horned Owl in flight (photos by Susan Castle)



#### **CELL PHONES FOR COLOMBIA**

Audubon's Colombia Birding Trail program, which is training local guides for birding tours and education, is in need of cell phones. These will be used to load bird calls, birding apps, etc. If you have used ones that you don't know what to do with, consider donating to Kern Audubon. **Bring your used cells to the next meeting** and Ginny Dallas will collect them for Chris Calonje, who is working on the Colombia Birding Trail for Audubon. He was the tour leader for the birding expedition Ginny, Larry, Madi & Rod participated in July 2015. Call Ginny if



**MEETUP** If you'd like to find out what similar groups to Audubon are doing, join the social media website **Meetup**, which sends email reminders and it's free! To become a member go to [www.meetup.com/Kern-Audubon-Society](http://www.meetup.com/Kern-Audubon-Society) and follow the easy instructions. We now have



#### **KERN AUDUBON ON FACEBOOK**

"Like" us and add your comments, photos, bird sightings and get updates on field trips and programs! We want to welcome LAURA FAHEY, as the new Facebook "host."



#### **KERN AUDUBON EXECUTIVE BOARD**

**2016-2017**

Kevin Fahey, President

*kjfahey@sbcglobal.net; 706-7459 (cell)*

John Wilson, Vice-President

*John1942@sbcglobal.net; 747-2855*

Sasha Honig, Secretary

*sashahonig@gmail.com; 325-0026*

Gary McKibbin, Treasurer

*gmckibbin42@gmail.com; 392-1403*

Harry Love, Conservation/Past President

*love3@bak.rr.com; 805-1420*

Deb See & Bill Moffat, Field Trips

*seemoffats@aol.com; 809-6135*

Ginny Dallas, Programs

*vdallas@bak.rr.com - 301-8188*

Linda McMillian, Membership Data

*lamcmillian@sbcglobal.net; 205-3521*

Carol Gates, Tehachapi Rep.

*Carol.gates18@gmail.com; 300-1429*

Mary Dufrain, Tehachapi Rep.

*marysalternative@yahoo.com; 972-4355*

Madi Elsea, Warbler Editor

*madielsea@aol.com; 322-7470*

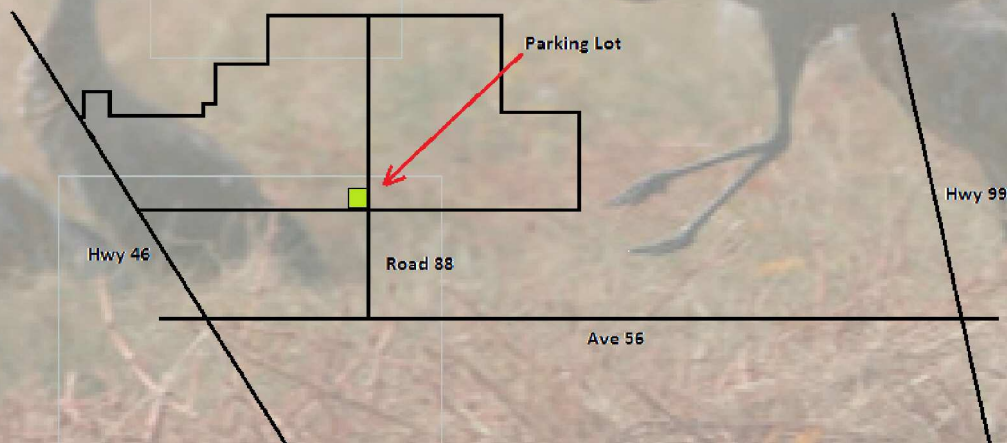
Looking ahead to Kern Audubon's **December 6th Holiday Gathering--potluck, auction & more! SEE PAGE 4!!**



# RETURN OF THE CRANES

**PIXLEY NATIONAL WILDLIFE  
REFUGE  
SATURDAY NOVEMBER 19, 2016  
3-6 PM**

Fall has arrived and the sandhill cranes have started their annual migration south to the Pixley National Wildlife Refuge. The staff of Kern and Pixley National Wildlife Refuges would like you to come join us for refreshments, and a short hike to the observation platform for an opportunity to see thousands of sandhill cranes returning to roost at the refuge. Meet in the parking lot, please bring a flashlight, sturdy comfortable shoes and layers. Special thanks to the Tulare County Audubon and the Kern Audubon.



## **WILL FEEDERS STALL MIGRATING BIRDS?**

*From Audubon:* It is the change in daylight that triggers the urge in a bird to migrate. It has nothing at all to do with food sources. Actually, putting the feeder out now will only help migrating birds as the ones on their way can stop off at your feeder to refuel and then immediately continue on their journey rather than waste time and resources looking for food. Migrating birds need all the help they can get as they have it hard these days with all the buildings in their way as they migrate.



## **HOLIDAY POTLUCK & AUCTION**

Looking ahead to Tuesday, December 6, 6:30pm for Kern Audubon's annual Holiday Potluck & Auction....Look for hand-crafted items as well as gifts, books, framed Audubon bird prints, etc.

How can you help? Please consider items you'd like to donate or perhaps there's a vendor you might approach to donate gift certificates or other items for the auction.

Please contact Harry Love, Auction Coordinator at 661/805-1420 or email [love3@bak.rr.com](mailto:love3@bak.rr.com) for information or to let him know what you'd like to donate. It's a good cause and a lot of fun!!

This annual event will be highlighted by a performance by the Bakersfield High School Chamber Choir. Put the date on your calendar and plan to attend!

## **#GIVING TUESDAY - NOVEMBER 29**

First there was Black Friday...then Cyber Monday...and now there's #GIVING TUESDAY, a day to counter consumerism and celebrate the incredible works of non-profits and charities, including KERN AUDUBON! The Giving Tuesday movement started in 2012 and has been fueled by the power of social media and collaboration. It is celebrated on the Tuesday following Thanksgiving and those widely recognized shopping days of Black Friday and Cyber Monday. Plan now to support your favorite charities on that day, especially Kern Audubon. More information will follow on how you can do just that--support your "Birds Matter!" non-profit!

### **WEBSITES to check out...**

**Info about birds?** To learn more about birds, go to the website of Cornell Lab of Ornithology, world leader in the study/conservation of birds: [www.birds.cornell.edu](http://www.birds.cornell.edu)

**Kern Birding** For a great website about Kern County birding spots: [www.natureali.org/birding.htm](http://www.natureali.org/birding.htm).

**Audubon California** has an excellent website: [www.Audubon-ca.org](http://www.Audubon-ca.org)

**Audubon in the news** - To learn about National Audubon go to: [www.audubon.org](http://www.audubon.org) or [chapterleaders@audubon.org](mailto:chapterleaders@audubon.org)

## **\$790,000+ for Hot Springs Valley Acquisition**

By Bob Barnes

The Kern River Valley Heritage Foundation (KRVHF) fundraising has now reached over \$790,000 for the purpose of fee title acquisition of the 189 acre Hot Springs Valley Wetlands Project property (HSVW) bordering the edge of community of Lake Isabella between CA Hwy178 and Lake Isabella Blvd across from Kern Valley Plaza shopping center. The project is being implemented in partnership with The Trust for Public Land.

\$650,000 has been committed by the California Department of Natural Resources plus \$100,000 from the National Audubon Society's Wimberly Wildlife Fund for Land Acquisition. With the over \$40,000 in grassroots donations representing 543 private individuals and organizations to date, over \$790,000 has been raised since October 2015.

Kerncrest Audubon, Kern Audubon, and numerous other Audubon chapters around California have provided significant donations in support of this acquisition. Anticipated benefits include habitat conservation & enhancement for the 2nd largest known population anywhere of the rare alkali mariposa lily (in the tens of thousands) plus the "Kern" Red-winged Blackbird and Tricolored Blackbird, both California Species of Special Concern. (See note below)

The initial fundraising goal is \$900,000 for acquisition and the start of getting the property ready for compatible public visitation. KRVHF encourages further help to raise the last \$110,000 and to add to on site signage recognition. Readers may join the hundreds of grassroots donors to date by sending a \$10 or more tax-deductible donation per name recognition (including on behalf of and in memory of) to KRVHF, PO Box 1249, Lake Isabella, CA 93240 or use the Donate page on the KRVHF website ([www.krvhf.org](http://www.krvhf.org)). Larger donations are always welcome. Those requiring more clarification to help in decision making, email [bbarnes@lightspeed.net](mailto:bbarnes@lightspeed.net) and ask to communicate with your choice of either Tom Anderson or Bob Barnes (760-382-1260).

The Kern River Valley Heritage Foundation thanks the broad base of grassroots donors to date, plus donors and supporters including National Audubon, Audubon California, Audubon Kern River Preserve, Kerncrest Audubon, Kern Audubon, plus Los Angeles, Morro Coast, Napa-Solano, Palomar Audubon (San Diego Co.) Sea & Sage Audubon (Orange Co.), Stanislaus, Tulare County Audubon Societies.

*Editor's note: The Kern Audubon Executive Board approved a donation of \$1000 toward the Hot Springs Valley Wetlands Project in October 2015.*

## FIGHTING FOR CENTRAL VALLEY BIRDS

Central Valley wetlands have never received the water they need to support migratory birds. Although the wetland refuges have never received their full allotment of water, drought has made it even more difficult to get these habitats the water they need to support migratory birds.

John Muir walked through the San Joaquin Valley in 1868 and described it as "the floweriest piece of world I ever walked, one vast level, even flower bed ... a smooth sea, ruffled a little in the middle by the tree fringing of the river and of smaller cross-streams here and there." At that time, the meandering Sacramento and San Joaquin rivers and their tributaries created extensive river habitats and wetlands that supported large numbers of migratory birds, wild salmon and large mammals. Then we divided the forests, drained the wetlands and dammed the rivers to build farms and cities. In the 1930s, California built the Central Valley Project and the State Water Project to pump water into these expanding agricultural and urban areas. Soon more than 90% of the valley's wetland habitat was gone, leaving just a patchwork of refuges. Waterfowl populations dropped from historic levels as high as 40 million to as low as 5 million today.

Recognizing this environmental deterioration, Congress in 1992 set minimum water allocations so the refuges could meet basic wildlife needs. A lawsuit and 2006 settlement agreement compelled state and federal government to restore the San Joaquin River. However, the refuges, however, have not once received their congressionally mandated amount of water, even in wet years.

Central Valley wetlands are of hemispheric importance, providing the most important stopping point on the Pacific Flyway for five million migratory waterfowl, which makes up 60 percent of the Pacific Flyway waterfowl population and 20 percent of the continental population. These wetlands also provide essential habitat for hundreds of other species, including resident waterfowl, such as mallards, other waterbirds, such as tricolored blackbirds, glossy ibis and Sandhill cranes, as well as other wildlife. Local, state and federal agencies have invested in refuges for decades to protect their value for birds, other animals and nearby communities. Destroying them would only endanger California's already fragile wildlife and degrade the other services refuges provide, such as groundwater recharge, water quality improvements and recreation. *Source: Audubon California*

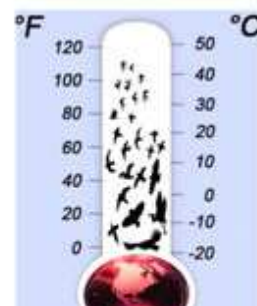


### **Victory! Endangered Species Act Protections Upheld for Coastal California**

**Gnatcatcher** The U.S. Fish & Wildlife Service has announced it will maintain Endangered Species Act protections for the Coastal California Gnatcatcher, rejecting an attempt by developers to remove federal protections. Coastal California Gnatcatcher populations have declined dramatically as their sage scrub habitat has disappeared, primarily due to development and wildfires. By upholding its designation as a threatened species, this decision helps protect its increasingly rare habitat from further damage, which also benefits the numerous other species that depend on it and the area's residents and visitors that can continue to enjoy this unique and endangered environment. *(Many members of KAS wrote in support of this action. Thank you, your efforts paid off!)*

### **CLIMATE CHANGE CORNER:**

**QUESTION: HOW CAN THERE BE GLOBAL WARMING WHEN THERE IS A SNOW STORM?**



### **NEW PHOTO BLINDS**

Kern and Pixley National Wildlife Refuges have newly installed photo blinds that will be available upon request by our visitors. The photo blinds will give visitors the opportunity to get a little closer to wildlife for observation and photography. Registration is free and there are many available spots still open. Take advantage of this opportunity to see wildlife from a different point of view! For more information about the Kern refuge photo blind please go to:

[www.fws.gov/refuge/Kern/visit/Photo\\_Blind.html](http://www.fws.gov/refuge/Kern/visit/Photo_Blind.html) and for information about the Pixley refuge photo blind please go to [www.fws.gov/refuge/Pixley/visit/Photo\\_Blind.html](http://www.fws.gov/refuge/Pixley/visit/Photo_Blind.html)

## AUDUBON'S WARBLER

Kern Audubon Society  
PO Box 3581  
Bakersfield CA 93385



www.kernaudubonsociety.org

Non-Profit Org  
US Postage  
PAID  
Bakersfield CA  
Permit #93

### RETURN SERVICE REQUESTED

Join KERN AUDUBON for these activities...

- Tues. Nov. 1, 7pm - KAS Meeting & program
- Tues. Nov. 8, 8:30am - Truxtun Lake field trip
- Sat. Nov. 12, 8am - Panorama Vista workparty
- Sat. Nov. 19 - 1:30pm Lower Tule River/Pixley Crane Festival field trip
- Sat. Nov. 26, 8:30am - Stallion Springs field trip

### Membership Application -- KERN AUDUBON SOCIETY (C4ZC300Z)

If you would like to be part of a grass-roots conservation organization with a distinguished history, join the National Audubon Society and Kern Audubon! Please complete the form below and send with your check.

Membership includes *Audubon Magazine* (6 Issues) and the *Audubon's Warbler* (10 issues)

\_\_\_\_ New Member \$20

\_\_\_\_ Renewal \$20

Make check payable to **NATIONAL AUDUBON SOCIETY**

**SEND** this form and your check to National Audubon to:

Kern Audubon  
PO Box 3581  
Bakersfield CA 93385

Name(s) \_\_\_\_\_ Amount  
enclosed \_\_\_\_\_

Address: \_\_\_\_\_ City \_\_\_\_\_ Zip \_\_\_\_\_

E-mail \_\_\_\_\_ Phone  
# \_\_\_\_\_