



# AUDUBON'S WARBLER

Vol. 43 no. 3 - MARCH 2014  
Newsletter of Kern Audubon Society  
A chapter of National Audubon Society  
[www.kernaudubonsociety.org](http://www.kernaudubonsociety.org)  
[www.kastehachapibird.org](http://www.kastehachapibird.org)

Kern Audubon Society  
Tuesday MARCH 4, 2014 - 7:00pm  
Kern Supt of Schools, 17th & L Sts.

## "What Does the Hummingbird Say: Why We Study Bird Song" Dr. Anne Houtman



*What can we learn from hummingbird song? The study of bird song has given us a richer understanding of the evolution of communication, the nature of human language and mind, and the impact of technology on the natural world. Hummingbirds' little-studied song offers unique insights into these matters, and illustrates the importance of field studies for science and for education.*

Join us for the March 4th Kern Audubon meeting to meet Dr. Anne Houtman, new Dean of the School of Natural Sciences, Math & Engineering at Cal State Bakersfield, and to hear her presentation on bird song. After graduating from Pomona College in Claremont with a Bachelor's Degree in anthropology, she went on to earn a Master's Degree in Anthropology from UCLA. A Fullbright Scholarship from the Institute of International Education gave her the opportunity to earn her Doctorate with a focus on Zoology from the University of Oxford. She says that her children were practically raised in field stations. Of particular interest was her work in Australia studying Zebra Finches as well as her studies of bird song.

### MARCH FIELD TRIPS

#### **Saturday March 1st - Flowing Wells & Rancho de Nada/Mojave Desert**

Flowing Wells Ranch is a private farming and wildlife management operation located in the Mojave Desert near Red Rock State Park. Rancho De Nada is an adjacent ranch. This is a great location for waterfowl, raptors, and occasional rarity. Flowing Wells and Rancho De Nada are private, so access is limited. Don't miss this opportunity to bird this productive habitat.

- Meet at the Tehachapi K Mart parking lot near Burger King at **7:00am** to carpool. RSVP to Angela Guy at [angelaguy@att.net](mailto:angelaguy@att.net) or 661-304-6816. Dress in layers: bring water, snacks, lunch, binocs (loaners available). Those who plan to ride-share should bring cash for gasoline. Plan on lunching at the ranch before heading back to Tehachapi.
- Bakersfield birders will meet at the Stockdale Park n Ride between Real Rd. and Hiway 99 at **6:15am** to carpool to Tehachapi. Call Deb for info: 805-0232

**March 8, Saturday, Condors at Bitter Creek National Wildlife Refuge.** We'll be meeting Martin from Friends of the Condors at Hwy 166 and Hudson Ranch Rd (formerly called Cerro Noroeste Rd) intersection at 10 am to tour the refuge. Bring lunch, binocs, water and layered clothes. For carpooling, meet at **9 am** at parking lot across from CUSB at Don Hart Dr. Back to Bakersfield by 3 pm. High clearance and 4 wheel drive vehicles preferable. Limit of 25, so for planning purposes, please RSVP to Deb See: 805-0232 or Bill at 201-9279.

**Wednesday March 12, Bird and Bike- 8:30am** Meet at Lake Ming near the marina to bike and bird Lake Ming and the group picnic area. Call Deb or Bill for info: 805-0232

**Saturday, March 29, Malibu Lagoon State Beach** At 9 am we will meet Santa Monica Bay Audubon to tour successfully restored wetlands habitat at Malibu Lagoon SB. Over 70 species can be seen in winter. \$12 parking per car. Bring lunch, binocs, water, etc. and \$10 for drivers. For carpooling meet at **6:50am to leave at 7 am** from Stockdale Park n Ride between Hwy 99 and Real Rd. Returning to Bakersfield by 3 pm. Call Bill Moffat or Deb See for information: 805-0232



## KERN AUDUBON EXECUTIVE BOARD

2013 - 2014

Harry Love, President/Conservation

love3@bak.rr.com; 589-6245

Sasha Honig, Secretary

sashahonig@gmail.com; 325-0026

Gary McKibbin, Treasurer

gmckibbin@farmersagent.com; 392-1403

Deb See & Bill Moffat, Field Trips

seemoffats@aol.com; 805-0232

Ginny Dallas, Publicity/Programs

vdallas@bak.rr.com - 301-8188

Kathy Love, Hospitality

kathylove64@gmail.com; 589-6245

Pat Turner, Membership Data

patriciajt@att.net; 398-8387

Carol Gates, Tehachapi Rep.

Carol.gates18@gmail.com; 822-0214

Mary Durfrain, Tehachapi Rep.

marysalternative@yahoo.com; 972-4355

Madi Elsea, Past President/Warbler Editor

madielsea@aol.com; 322-7470

## PRESIDENT'S NEST



I was at a public meeting recently and introduced myself as president of the Kern Audubon Society. Later, a person in the audience came up to me and asked how many paid staff members we have. When I told him none--we were all volunteers--a surprised look appeared on his face. He then commented on how many topics and events KAS was involved in with only volunteers. Volunteers are the source of our strength and it is important that the list of volunteers gets longer. At the upcoming March meeting Kathy and I will be asking you to volunteer your talent and time. Our needs are job specific, from education outreach to programs. When you sign up, it means you will work with other Audubon members, with a common goal. All jobs get easier when you can combine your talents and knowledge. Please come to the March program to learn more about how you can make KAS even stronger.

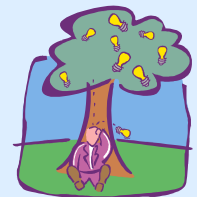
Harry Love, President

## MARCH 8th-Panorama Vista Preserve

On Saturday, March 8<sup>th</sup>, 9-11 AM, Kern Audubon will be having its monthly workday at Panorama Vista Preserve. With spring weather arriving, the task this time will be weeding. No tools needed. Just bring a hat, gloves, and water. Meet at the east end of Roberts Lane off of Manor Drive.

The work party in February was fantastic with many people deciding it was worthwhile to help at PVP. Many thanks to Pat Turner for getting so many volunteers to come to the Preserve.

The following people volunteered their valuable time: **Barbara Long, Bill McDonald, Al Caetano, Dana Adams, Larry Wailes, Diane Karch, Bill Karch, Pat Turner, Vicki Boehning, Zach Boone - Garces students: Steven Demler, Aaron Mohammadi, Obeyd Mohammadi; Jan Graves & Foothill Interact Club members: Arthur Recio, Diana Orea, Patricia Jimenez, Andres Orea, and Michael Gutierrez; Margaet Duriga Marion Vargas, Lucy Clark, Clyde Golden, Maria Polite, Carolyn & Joe Belli, Jack McGee (came with skip loader), David Schaad, Andy Honig.** If you need additional information, contact Harry Love (805-1420).



## Olympic Birdfest 2014

April 4-6, 2014, Sequim, WA

A bird watching vacation for beginners to experts, from leisurely strolls to active hikes. Bird for a few hours, or all day ... from the dawn chorus to the evening owl prow. Enjoy guided birding trips, boat tours, silent auction, gala banquet, and more. Featured speaker is Noah Strycker, author of "Bird World: Fascinating Parallels Between Bird and Human Behavior". [www.olympicbirdfest.org](http://www.olympicbirdfest.org) for info/registration

## WEBSITES to check out...

**Info about birds?** To learn more about birds, go to [www.birds.cornell.edu](http://www.birds.cornell.edu), the website of Cornell Lab of Ornithology, world leader in the study and conservation of birds

**Kern Birding** For a great website about Kern County birding spots: [www.natureali.org/birding.htm](http://www.natureali.org/birding.htm).

**Audubon California** has an excellent website: [www.Audubon-ca.org](http://www.Audubon-ca.org)

**Audubon in the news** - To learn about National Audubon go to: [www.audubon.org](http://www.audubon.org) or [chapterleaders@audubon.org](mailto:chapterleaders@audubon.org)

**LOOKING AHEAD...Tues. April 1st, 7pm - No foolin!** John Eigenauer will present a program about his Australia birding adventure...come and see the Laughing Kookabura!

## **April 18-20: Tricolored Blackbird Survey (statewide)**

If you are interested in participating, contact Monica Iglecia with your name, county of preference & contact info: [miglecia@audubon.org](mailto:miglecia@audubon.org) More info to follow in April Warbler.

**YEAR-END APPEAL...** The Kern Audubon Executive Board wishes to acknowledge these additional donors to the year-end appeal, which now totals **\$2100**. Thank you for helping to "create a culture of conservation in Kern County" in 2014!

*Douglas & Paula Blagdon*

*Margaret Clark*

*Joanne Conard & Dan Walker*

*Patricia Turner*

*Linda Honey*

*Sasha & Andy Honig*



## KERN AUDUBON ON FACEBOOK

"Like" us on FACEBOOK and add your comments, photos, bird sightings, etc. as well as get updates on field trips and programs!

## SAVING IBA'S: SOUTHERN SIERRAS

***Saving Important Bird Areas Initiative*** is one of the strategies through which Audubon Society is working to conserve crucial birds and habitats. Through this initiative, Audubon directs its focus towards the **Important Bird Areas** projects which could benefit from national level attention and increased science support. In recent months, national Important Bird Areas staff has been working in coordination with state and local chapters, providing support to these projects by performing spatial analysis, mapping, compilation and summarization of data, as well as coordinated planning.



Photo by Andrea Jones, Audubon California

The ***Southern Sierras Project*** encompasses four IBAs--***South Fork Kern River Valley, Tehachapi Mountains, Kelso Creek, and Southern Sierra Desert Canyons***--nestled in the southern Sierra Mountains at the confluence of two mountain ranges, the Central Valley, and the Mojave Desert. This unique physiography makes the region popular for wind developers, who seek to take advantage of the funneled winds along the foothills of the mountains, building large wind farms. The region is also a rich area for birds, with populations of breeding Southwestern Willow Flycatcher and Yellow-billed Cuckoos along the Kern River. The relatively lush mountain canyon act as migratory stopover sites for northbound songbirds in the spring and mountain ridges carry raptors south in the fall. In addition, California Condors range within this region, particularly in the Tehachapi Mountains. With these conflicting uses of land, the need to properly site wind to minimize bird mortality is crucial. However, this is a remote region and data on bird abundance is sparse. In an effort to provide siting guidance on wind development projects, National Audubon staff worked with Audubon California and Kern River Preserve staff to help identify existing data that could be used to provide input on wind development siting.

Data from a recent US Army Corps RADAR study, which was designed to help prevent bird strikes at Air Force bases, for the China Lake NEXRAD station was rectified and mapped to display areas of spring migration hotspots in the region. In addition, ***eBird*** data helped fill in additional gaps, primarily showing areas popular with birders seeking to find concentrations of spring migrants in the region. Through this process of rectifying and aggregating data, a number of areas critical to bird migration in the southern Sierras were identified for the first time. Identifying these new hotspots helps local Audubon staff members in planning meetings, where they are working to divert wind development projects to areas that are less important to birds. Data gaps remain in the region, but the efforts described here have helped identify areas in need of more information. Audubon California is now seeking funding to use targeted mobile RADAR research to fill in data gaps at the Southern Sierra IBAs, which will help quantify the number of migrants using sites in wind development areas, identify the timing of migration both seasonally and daily, and possibly understand the altitudes at which birds are flying.

*Source: National Audubon Society*

### **GREATER SAGE GROUSE FIELD TRIP**

Tulare Audubon Society invites interested birders to participate in a weekend field trip, March 15-16, to the Bishop area (eastern Sierra) to see and hear the seasonal gathering of the Greater Sage Grouse, a species of special concern in California. For information about the Greater Sage Grouse (pictured at right) and the field trip go to: [www.tularecountyaudubon.org](http://www.tularecountyaudubon.org) or contact Kim Kushka, 784-2106.



## AUDUBON'S WARBLER

Kern Audubon Society  
PO Box 3581  
Bakersfield CA 93385



www.kernaudubonsociety.org

Non-Profit Org  
US Postage  
PAID  
Bakersfield CA  
Permit #93

## RETURN SERVICE REQUESTED

Join KERN AUDUBON for these activities...

- Sat. March 1, Flowing Wells field trip
- Tues. March 4, 7:00pm - Program & meeting
- Sat. March 8, 9 - 11am - PVP Workparty
- Sat. March 8, 9am - Bitter Creek NWR field trip
- Wed. March 12, 8:30am - Lake Ming field trip
- Sun. March 29, 7am - Malibu Lagoon field trip

### Membership Application -- KERN AUDUBON SOCIETY (C4ZC300Z)

If you would like to be part of a grass-roots conservation organization with a distinguished history, join the National Audubon Society and Kern Audubon! Please complete the form below and send with your check !

Membership includes *Audubon Magazine* (6 Issues) and the *Audubon's Warbler* (10 issues)

\_\_\_\_ New Member \$20

Make check payable to **NATIONAL AUDUBON SOCIETY**

Send this form and your check for \$20 to:

Kern Audubon  
PO Box 3581  
Bakersfield CA 93385

Name(s) \_\_\_\_\_ Amount enclosed \_\_\_\_\_

E-mail \_\_\_\_\_ Phone # \_\_\_\_\_