



AUDUBON'S WARBLER

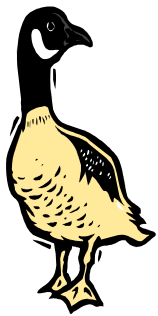
Vol. 42 no. 1 - JANUARY 2013
Newsletter of Kern Audubon Society
A chapter of National Audubon Society
www.kernaudubonsociety.org
www.kastehachapibird.org

KERN AUDUBON SOCIETY
Tues.. JAN. 8, 2013 - 7:00PM
Reider Education Center - 20th & K Sts.
Room 204

"Partners in Habitat Restoration"
US Fish & Wildlife - Kern Nat'l Refuge
Jacob Byers, Wildlife Biologist



Jacob Byers, center, banding Sandhill Cranes



"Partners for Fish & Wildlife" is sponsored by the US Fish & Wildlife Service through the National Wildlife Refuge system with the goal of increasing habitat restoration on private lands throughout the state. Jacob Byers is a private lands specialist working with landowners in Kern, Kings and Tulare counties to preserve habitat for the benefit of federal trust species such as migratory birds (waterfowl and songbirds), including those with "threatened" or endangered species status. Jacob is stationed at the Kern National Wildlife Refuge and is employed by USFWS and will present a program about this exciting partnership. He has been with KNWR for the past two years and previously worked with the California Waterfowl Association.

Join us on Tues. January 8th at the Reider Education Center, 20th & K, Bakersfield!

JANUARY FIELD TRIPS

Wed. Walk January 9 - Lake Ming

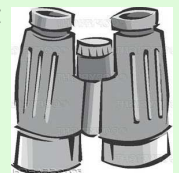
This month's Wednesday Walk with Ranger Bill Moffat will be at Lake Ming, a good spot for wintering waterfowl, etc. Bring binocs, water & snacks. If you live on the west side meet at 8:30am at the Rosedale COSTCO near the gas station. Those on the east side of Bakersfield can meet at the first parking area at Lake Ming, 9:00am. Call Bill for more information: 201-9279.

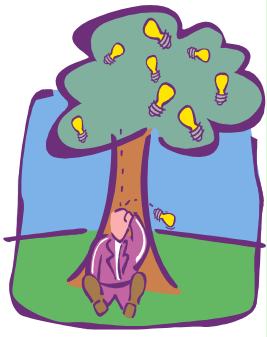
Sun. January 13, 8:00am - Kern National Wildlife Refuge

A trip to the Kern Nat'l Wildlife Refuge in winter is a fantastic opportunity to see thousands of wintering ducks, grebes, shorebirds and raptors. Scott Frazer, Project Leader at KNWR and member of Kern Audubon will provide leadership for this morning field trip and will take us to parts of the refuge not normally open to the public. Meet at Kern Parkway parking area across from CSUB (Stockdale Hiway & Don Hart Dr) at 8:00am to carpool. Bring your lunch, snacks, water & binoculars and \$10 donation for transportation. Call AI for info: 833-6705. Return about 1pm.

Sat. January 26, 10:00am - Bakersfield Treatment Ponds

Michael McQuerry and Gary File will co-lead this birding field trip to the city sewer ponds, a good spot to view waterfowl and shorebirds. Michael and Gary are good teachers, so this is an opportunity to learn more about ducks and identifying shorebirds such as sandpipers and other "peeps." Meet at the waste water treatment plant gate at the end of Mt. Vernon--take the Mt. Vernon exit off of Hiway 58 and go south approximately 3 miles past the green waste plant. Bring water, snacks, binoculars. Call Deb See for information: 805-0232.





Welcoming the New Year at the Preserve

On **Saturday, January 12, from 9-11 AM** we will welcome in the New Year by working at Panorama Vista Preserve. Tasks to be completed are mulching and creating water basins for the trees. December's workday was unbelievable, with over 30 participants! Kern Audubon's Bill McDonald, Clyde Golden, Lucy Clark, Andy Honig, Stephen Yaws, Vicki Boehning, David Schaad, Rich O'Neil worked along with Harry Love who organized students from three high schools: INTERACT Clubs (Foothill and Mira Monte) and North High's Wildlife Club. It was great to see such a diverse group of students working hard with no complaints!

Hope you can make the January workday. It is a great way to work with members and great students. Contact mHarry Love at 805-1420 or love3@bak.rr.com for details.

DECEMBER AUCTION A SUCCESS

The December meeting was highlighted by another successful auction which raised \$1370! Many thanks to JOE BUGNI & HEATHER ELLISON for their excellent organizing efforts and to BILL MOFFAT who did a stellar job as auctioneer! Many members and friends of Kern Audubon donated all kinds of wonderful items that resulted in bidding frenzy! We especially want to thank these businesses for their donations: CONES HEALTH FOODS, VILLAGE PET MARKET, MILL CREEK ANTIQUE MALL, ROUND-UP FEED & PET SUPPLY, CONDORS HOCKEY, ICE SPORTS CENTER, TRADER JOE'S, F.A.C.T., CSUB JAZZ FESTIVAL, WALL STREET IMPRINTABLES, TOO FAT SANDWICH CO. Special thanks to CASEY CHRISTIE, *Bakersfield Californian* photographer who donated 3 bird photos and to JOE BUGNI who donated 8 bottles of his home-grown honey. CAROL GATES provided greenery & cones for the tables and MARY DUFRAIN showed her amazing pictures of birds that have visited her backyard in Bear Valley Springs. Also, with much appreciation to board members who helped organize the evening's event!

KERN AUDUBON ON FACEBOOK

Kern Audubon is now part of social media! Look for us on Facebook, thanks to Anke Hodenpijl who has set up a Facebook page and account for Kern Audubon. To access our page, you need to have a personal Facebook account, so sign-up if you aren't already a member (go to www.Facebook.com). Then go to Kern Audubon's page and "like" us. You will then automatically receive Kern Audubon's postings! You can also post bird photos and bird sightings!



KERN AUDUBON EXECUTIVE BOARD 2012 - 2013

- Madi Elsea, President
madielsea@aol.com; 322-7470
- Al Caetano, Vice-President
alvic@bak.rr.com; 833-6705
- Patty Richardson, Executive Secretary
turtlewoman88@yahoo.com
- Gary McKibbin, Treasurer
gmckibbin@farmersagent.com; 392-1403
- Harry Love, Conservation
love3@bak.rr.com; 589-6245
- Richard Adams, Programs
adams14@live.com; 321-9527
- Deb See & Bill Moffat, Field Trips
seemoffats@aol.com; 805-0232
- Ginny Dallas, Publicity
vdallas@bak.rr.com - 301-8188
- Kathy Love, Hospitality
kathylove64@gmail.com; 589-6245
- Madi Elsea, Warbler Editor
madielsea@aol.com; 322-7470
- Carol Gates, Tehachapi Rep.
Carol.gates18@gmail.com; 822-0214
- Angela Guy, Tehachapi Rep.
Angelaguy@att.net; 304-6816
- Ted Murphy, Past President
tmurphy@bak.rr.com; 325-0307

Tehachapi Birding



Kern Audubon-Tehachapi

Tues. Jan. 29, 2013

7:00pm

Golden Hills Elementary School
Tehachapi CA

"Winter Bird Feeding in the Tehachapis" Mary Dufrain & Angela Guy

Mary Dufrain is a talented photographer with an amazing collection of bird feeders in her backyard in Bear Valley Springs. Angela Guy is an avid Tehachapi birder and both have stories, ideas, and pictures about Tehachapi area birds...and a great recipe for suet! They will share about how to attract and feed birds in your backyard during winter.



Kern Audubon Society, founded in 1974, is a chapter of the National Audubon Society. Its mission is to provide educational programs and services that build awareness of the importance of birds and other wildlife and to promote conservation and restoration of natural habitats, primarily in Kern County.

WINTER BIRDING

Kern County is America's birdiest inland county and there are many places to see birds even in winter. Here are some of them:

HART PARK. Many habitats from small lakes to oak forest are home to a wide variety of birds: jays, woodpeckers and flickers, wood ducks, Canada geese, wading birds, red-shouldered hawks and rose-ringed parakeets, to name a few.

LAKE MING. Wintering waterfowl, occasional eagles and osprey. Leaving the Lake Ming parking lot, turn left and drive to the picnic area next to the golf course. Woodpeckers and sapsuckers are often in the trees, and mixed flocks of white- and gold-crowned sparrows, juncos, and others feed under the trees.

Returning to Lake Ming, continue west up the hill toward the County RV Park; at the top of the hill is a park on the right, on a bluff overlooking the Kern River. Sparrows, juncos, Western bluebirds and more may be seen under the trees.

PANORAMA VISTA PRESERVE (at the end of Roberts Lane, off Manor) Riparian habitat being restored; many types of birds. One of the few places in Bakersfield to see phainopepla. Park outside and walk on flat dirt roads or horse trails.

KERN RIVER BIKE PATH Birds can be seen anywhere along the 30 mile bike path and especially where there is water in the river. Near Lake Truxtun and Little Lake Truxtun, watch for cormorants, egrets, green herons, various waterfowl; on the path, look for California thrashers, warblers, woodpeckers, jays. Osprey and kingfishers are sometimes seen.

TULE ELK RESERVE (Stockdale Highway west of I-5, then turn left on Morris Road to the Reserve) On Morris Road (watch for traffic, or simply pull off and park) look for burrowing owls on the east side and blackbirds, ravens, curlews, and white-faced ibis in the alfalfa fields on the west. Sparrows, horned larks, etc. along the road.

Morris Road turns right and becomes Station Road; the entrance to the Reserve is about ¼ mile on the left. Inside the gate, bear right and park near the visitor platform. Watch for black phoebes, warblers, finches; try to spot the great horned owls, barn owl, white-tailed kites, harriers and other residents (including the elk) from the platform. Swallows and Swainson's hawks will return in the spring. Auto tours of the entire Reserve are offered twice monthly on Sundays; call Ranger Bill Moffat at 201-9279 for details.

KERN NATIONAL WILDLIFE REFUGE is about an hour's drive north from Bakersfield. Flooded ponds shelter wintering waterfowl; many raptors also present. NOT OPEN TO VISITORS ON WEDNESDAYS OR SATURDAYS DURING DUCK HUNTING SEASON (October thru January). Good flat gravel roads, about a 6-mile loop.

Directions: From Interstate 5, exit at Lost Hills on Highway 46 and drive east 5 miles to Corcoran Road and turn north. Drive 10.6 miles to the Refuge at the intersection of Corcoran Road and Garces Highway (Highway 155). Entrance is on the west side of the intersection. From State Highway 99, at the community of Delano, exit at Highway 155 (Garces Highway). Travel 19 miles west on Garces Highway to the Refuge entrance at the intersection of Corcoran Road and Garces Highway.

YOUR OWN BACK YARD. Keep your hummingbird feeder full (and clean) for Anna's hummingbirds which are here year-round, including winter. Ruby-crowned kinglets and orange-crowned warblers will also drink if some of the ports are left open. Watch also white-crowned sparrows, juncos and yellow-rumped warblers this winter in your backyard!

These are just a few of the many places to watch Kern County birds; some others include Kern River Preserve in Weldon, Canebrake Ecological Reserve, Windwolves Preserve, Carizzo Plain, Pixley NWR, and Butterbredt Springs. Kern Audubon's frequent field trips will show you many more! A good website for finding out about these and other birding spots in Kern County, go to www.natureali.org.

Contributed by Barbara & Roger Coley

KERN AUDUBON LIBRARY

David Schaad will be bringing books from the library to our January 8th meeting, so please check it out! There are lots of interesting books to read and if you have a book to return, please bring it to the meeting. Questions? Call David at 428-2841.

Here's another book review: *Sharing a Robin's Life* by Linda Johns:

This is a true story of life and interaction between a robin and a woman who was willing to adopt the abandoned bird and experience a bird's way of life. The story questions many of our preconceptions about birds. The robin, Country, communicates, solves problems, and displays emotion as she plays, hunts bugs, builds nests and does other "bird" things.



AUDUBON'S WARBLER

Kern Audubon Society
PO Box 3581
Bakersfield CA 93385



www.kernaudubonsociety.org

Non-Profit Org
US Postage
PAID
Bakersfield CA
Permit #93

RETURN SERVICE REQUESTED

Join KERN AUDUBON for these activities...

- Tues. Jan. 8, 7:00pm - Kern Aud Meeting & Program
- Wed. Jan 9, 8:30am - Lake Ming Walk
- Sat. Jan 12, 9-11am - Panorama Preserve Workparty
- Sun. Jan. 20, 8am - Kern Wildlife Refuge field trip
- Sat. Jan 26 10am - Treatment ponds field trip
- Tues. Jan 29, 7pm - Kern Aud-Tehachapi meeting

Membership Application -- KERN AUDUBON SOCIETY (C2ZC300Z)

If you would like to be part of a grass-roots conservation organization with a distinguished history, join the National Audubon Society and Kern Audubon! Please complete the form below and send with your check !

Membership includes *Audubon Magazine* (6 Issues) and the *Audubon's Warbler* (10 issues)

____ New Member \$20

Make check payable to **NATIONAL AUDUBON SOCIETY**

Send this form and your check for \$20 to:

Kern Audubon
PO Box 3581
Bakersfield CA 93385

Name(s) _____ Amount enclosed _____

Address _____ E-mail _____

City _____ Zip Code _____ Phone # _____

Please indicate if you would like to receive your *Audubon's Warbler* electronically: ____yes ____no