



# AUDUBON'S WARBLER

Vol. 46. no10 - DECEMBER 2017  
Newsletter of **Kern Audubon Society**  
A chapter of National Audubon Society

TUES. DECEMBER 5, 2017

## Kern Audubon's ANNUAL HOLIDAY GATHERING & POTLUCK

6:30PM

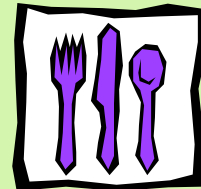
Location: First United Methodist Church  
Fellowship Hall  
4600 Stockdale Hiway (& Montclair)  
(Please note the time & location change for this meeting!!)

ENTERTAINMENT:  
The Bakersfield High School Chamber Singers  
Christopher Borges, Conductor

### Plus a delightful POTLUCK DINNER:



Bring a food item to share.....  
...main dish (for 8-10 people)  
...salad or side dish  
...dessert  
(Drinks & table service provided)



PLUS...

### Live & Silent AUCTION

This is our most fun & important fund-raiser for the year! Items already promised for the auction are:

- handmade bird-themed quilt by Randi Hodson
- private tour for 6 of Tejon Ranch
- private caravan tour of Wind Wolves Preserve for 10

More donations are certainly needed, so please contact Harry Love with a brief description of what you plan to bring. Perhaps you have homemade jams, a "re-gift" item, artwork, tickets to the theater, a merchant's gift certificate, etc. to donate--call or email Harry Love ((805-1420; harrylove1944@gmail.com) with your contribution. If you can't join us but have something to donate, contact Harry.



Come on out for a special evening and a fun way to raise funds!

## DECEMBER FIELD TRIPS



### **Sat. Dec. 9, 9:00am - Panorama Vista Preserve**

Join Andy Honig & Deb See for a morning walk through Panorama Vista Preserve along the Kern River. Wear good walking shoes, bring binocs, water, hat and meet at the east end of Roberts Lane at the locked gate. (Take Union Ave to Manor Drive and turn right/east on to Roberts Lane). Questions? Contact Deb See 809-6135.

### **Sun. Dec. 10, 8am - Tejon Ranch**

This will be a docent-led outing on the San Joaquin side of Tejon Ranch. Outing is limited to 10 participants and there will be a \$20/person registration fee. If interested, RSVP to Deb (809-6135) or Bill (805-0232) by Thurs. Dec. 7 as waivers need to be completed before arrival. They will provide further information about meeting place, etc. Bring water, binocs, snacks, dress warmly, Some loaner binoculars available.

### **Wed. Dec. 20, 8:00am - Beale & Stramler Park areas**

Bill Moffet will lead a morning of birding as part of the Bakersfield Christmas Bird Count. The first stop is Beale Park and the target species is the Spotted Dove. Meet at the corner of Oleander & Dracena at 8am. Bring water, snacks, binocs (loaners available). The second area to be covered is Stramler Park and behind Sam Lynn Ballpark. Contact



## WORKPARTY AT PANORAMA VISTA PRESERVE

**Saturday, December 9, 9-11 AM** The next work day will be Saturday December 10, 9-11 a.m. However bring your hat, water, work shoes and a shovel if you have one. We will be uncovering drip lines and other work. If you have questions about the event please contact me at [davidws@pacbell.net](mailto:davidws@pacbell.net) Meet at the east end of Roberts Lane off of Manor Drive at the locked gate. Just 2 hours for a good cause!

## NEW WEBMASTER

The Kern Audubon Executive Board is pleased to welcome JAKE ABEL as Kern Audubon's new webmaster for our website: [www.kernaudubonsociety.org](http://www.kernaudubonsociety.org). Jake is a graduate of Bakersfield's Highland High School and Ohio State University. He returned to Bakersfield several years ago and works as a control systems engineer. He's presently with AccuFlow where he also manages the company's website.

Jake volunteered to assume the role of KAS webmaster, which we appreciate. He's taking over for ROD LEE, who has served as webmaster for over 10 years! Thank you, Rod, for your years of creativity and wonderful service to Kern Audubon!!

**Looking ahead to 2017...**Kern Audubon's January meeting will be a week later than usual, due to Kern Superintendent of Schools being closed over school holidays. We will meet on **Tuesday January 9,**

**BIRD FESTIVALS** are fun! You meet other birders, visit new places, see lots of birds, hear interesting presentations, support local economies and much more. For information about festivals around the country, go to...

[www.Americanbirding.org/festivals](http://www.Americanbirding.org/festivals)  
[www.birdwatchersdigest.com](http://www.birdwatchersdigest.com)

Go to [www.Mindfulbirding.org](http://www.Mindfulbirding.org) for a complete list of over 50 birding festivals in the Pacific Flyway in 2018. Coming January 12-15 is the Morro Bay Birding Festival and in Chico Jan 24-28

If you'd like to find out what similar groups to Audubon are doing, consider joining **Meetup!** You get email reminders of events and it's free! Go to: [www.meetup.com/Kern-Audubon-Society](http://www.meetup.com/Kern-Audubon-Society) and follow the instructions. We have over 290 members! Thanks to Carly Summer for



## WEBSITES to check out...

**Info about birds?** Go to [www.birds.cornell.edu](http://www.birds.cornell.edu), the website of Cornell Lab of Ornithology, world leader in the study and conservation of birds

**Kern Birding** For a great website about Kern County birding spots: [www.natureali.org/birding.htm](http://www.natureali.org/birding.htm).

**Audubon California** has an excellent website: [www.Audubon-ca.org](http://www.Audubon-ca.org)

**Audubon in the news** - To learn about National Audubon go to: [www.audubon.org](http://www.audubon.org)



Do you shop on the internet? Do you use Amazon? If so, you can help Kern Audubon through **Amazon Smile**, a site that allows you to shop for the same items as Amazon but with the added feature that .5% of what you pay to Amazon will go to KAS. Go to [smile.amazon.com](http://smile.amazon.com) to register and select your charity of choice, Kern Audubon Society. When you buy something, just go to the Smile site. It's easy and Kern Audubon will benefit!



## KERN AUDUBON ON FACEBOOK

"Like" us and add your comments, photos, bird sightings and get updates on field trips and programs! Laura Fahey is our editor: [itzimom@sbcglobal.net](mailto:itzimom@sbcglobal.net).

## **CHRISTMAS BIRD COUNTS - KERN COUNTY**

One of the traditions long-associated with Audubon is the annual Christmas Bird Count. Even older than Audubon itself, the CBC began in 1900 as an alternative to the traditional Christmas BIRD HUNT, in which teams shot as many birds as possible. The first count included 27 people in 25 locations, but they were armed with pencils and binoculars! The CBC is the oldest bird census in the world with over 50,000 volunteers in 2000 locations, providing one of the most important bodies of information on wildlife data in the world. The goal is to count all the birds in a 15 mile radius with teams being assigned to a section in that radius. If you are interested in participating in these daylong counts, contact the compiler listed below or Alison Sheehy (natureali@gmail.com) or go to her website: [www.natureali.org](http://www.natureali.org)

### **FRIDAY, December 15, 2017**

**California City** Kern County: Compiler [Alexia Svejda](#): (661) 810-6268 - year began 2015

### **SATURDAY, December 16, 2017**

**Butterbrecht**, Kern County: Compiler: [Charles Bragg](#), (310) 454-9662 - year began 1977

**Lancaster**, Los Angeles/Kern Counties: Compiler: [Mary & Nick Freeman](#), (818) 247-6172

### **SUNDAY, December 17, 2017**

**China Lake**, Kern & San Bernardino Co: Compiler: [Pete Woodman](#), (760) 377-3466 - Year began: 1957

### **MONDAY, December 18, 2017**

**Tehachapi**, Kern County: Compiler: [Larry Parmeter](#), Phone: (559) 276-8753 - began 1992

### **WEDNESDAY, December 20, 2017**

**Bakersfield**, Kern County: Compiler: [John Wilson](#) (661)366-0283 resumed in 1973

### **SATURDAY, December 30, 2017**

**Carrizo Plains**, Kern & San Luis Obispo Co: [Roger Zachary](#), (805) 466-6222 - Began 1971

**Red Rock Canyon**, Kern County: [Jean Rhyne](#) & [Alexia Svejda](#): Phone (661) 810-6268 - held 1998 - 2004  
restarted 2014

**South Fork Valley**, Kern & Tulare Counties: Compiler [Denise LaBerteaux](#), Phone: (760) 378-4278 - year began 1992

### **SUNDAY, December 31, 2017**

**Kern River Valley** CBC, Kern County: Compiler: [Tim Ludwick](#) - year began 1979

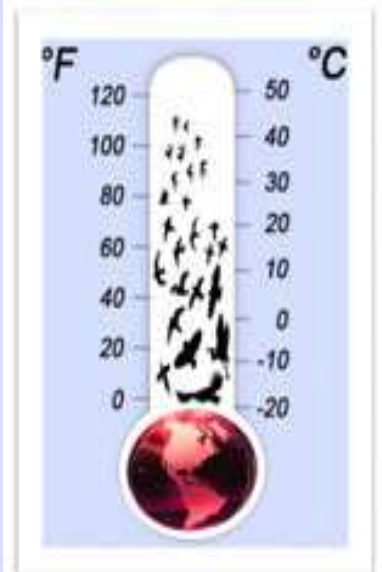
Participants are typically assigned to teams based on their bird identification skill level and endurance. The count results are tabulated by National Audubon and Cornell Lab of Ornithology. Help is needed on many of these counts, so find one that interests you and contact the compiler for more information. (New birders are paired with veterans, so you don't have to be an expert.) Too cold to come out on a cold day? How about keeping a list of birds that you see in your yard on that day (be a "feeder watcher"), or you can join a team to cover a territory



Above: Kern & Pixley National Wildlife Refuge staff talk about Sandhill Crane migration during the recent "Return of the Cranes" event, attended by over 50 engaged birders. Visit the cranes this

### **CLIMATE CHANGE CORNER:**

**What's happening in the Arctic**--The Arctic sea surface freezes each winter, but an increasing part of it melts again in the summer. The area that's still ice-covered in September has declined sharply: in 1979, 2.78 million square miles to 1.82 million square miles in 2016. The Greenland ice sheet, since 2002, has lost an average of 290 metric tons of ice a year. Antarctica is losing less but it is vulnerable. Because its ice sheet sits on the seabed (Arctic ice sheet floats), when glaciers collapse, the sea level rises-



## AUDUBON'S WARBLER

Kern Audubon Society  
PO Box 3581  
Bakersfield CA 93385



www.kernaudubonsociety.org

Non-Profit Org  
US Postage  
PAID  
Bakersfield CA

### RETURN SERVICE REQUESTED

Join KERN AUDUBON for these activities...

- Tues. Dec. 5, 6:30pm - Holiday Gathering, potluck and auction at First UMC, 4600 Stockdale
- Sat. Dec 9, 9-11am - PVP Workparty
- Sat. Dec 9, 9am - PVP Field trip
- Sun. Dec. 10, 8am - Tejon Ranch Field Trip
- Wed. Dec. 20, 8am - Beale Park & Kern Riverfield trip

### Membership Application -- KERN AUDUBON SOCIETY (C4ZC300Z)

If you would like to be part of a grass-roots conservation organization with a distinguished history, join the National Audubon Society and Kern Audubon! Please complete the form below and send with your check.

Membership includes *Audubon Magazine* (6 Issues) and the *Audubon's Warbler* (10 issues)

New Member \$20

Renewal \$20

Make check payable to **NATIONAL AUDUBON SOCIETY**

**SEND** this form and your check for \$20 to:

Kern Audubon  
PO Box 3581  
Bakersfield CA 93385

Name(s) \_\_\_\_\_ Amount \_\_\_\_\_  
enclosed \_\_\_\_\_

Address: \_\_\_\_\_ City \_\_\_\_\_ Zip \_\_\_\_\_